

# IPC-HFW1235S-W-0360B

## 2 MP IR Mini-Bullet Wi-Fi Network Camera



### System Overview

The IR Megapixel Fixed Mini-Bullet camera delivers 2MP resolution with a choice of 3.6mm. The camera's elegant blend of aesthetics combined with its compact form factor provides an excellent choice for a variety of small to mid-size, indoor/outdoor applications at an affordable price.

### Functions

#### True Day/Night

A day/night mechanical IR cut filter makes this camera ideal for applications with fluctuating lighting conditions, delivering color images during the day and automatically switching to monochrome as the scene darkens.

#### Regions of interest

Regions of Interest (ROI) is a user defined feature that allows the operator to monitor specific areas of a scene while still maintaining overall situational awareness of less important areas.

#### Smart IR

With IR illumination, detailed images can be captured in low light or total darkness. The camera's Smart IR technology adjusts to the intensity of camera's infrared LEDs to compensate for the distance of an object. Smart IR technology prevents IR LEDs from whiting out images as they come closer to the camera. The camera's integrated infrared illumination provides high performance in extreme low-light environments up to 30m (98ft).

#### Image flip

Capturing unnecessary data such as surrounding hallway walls can increase storage requirements without any added value. The image flip feature allows the camera's image to be rotated in 90° increments for better video optimization.

#### Protection

Supporting  $\pm 10\%$  input voltage tolerance, this camera suits even the most unstable conditions for outdoor applications. Its 2KV lightning rating provides protection against the camera and its structure from the effects of lightning.

#### Interoperability

The camera conforms to the ONVIF (Open Network Video Interface Forum) specifications, ensuring interoperability between network video products regardless of manufacturer.

### Features

- 1/2.9" 2 Megapixel progressive CMOS
- H.265 / H.264 dual-stream encoding
- 25/30 fps @ 1080P (1920x1080)
- DWDR, Day/Night(ICR), 3DNR, AWB, AGC, BLC
- Multiple network monitoring:  
Web viewer, CMS (DSS/PSS) & DMSS
- Wi-Fi support
- 3.6 mm fixed lens
- Max IR LEDs Length 30 m
- IP67

**Technical Specification**

**Camera**

Image Sensor	1/2.9" 2 Megapixel progressive CMOS
Effective Pixels	1920(H) x 1080(V)
RAM/ROM	256MB / 16MB
Scanning System	Progressive
Minimum Illumination	0.1 Lux / F2.0 (Color), 0 Lux / F2.0 (IR on)
S/N Ratio	More than 50dB
IR Distance	Distance up to 30m (98ft)
IR On/Off Control	Auto / Manual
IR LEDs	24

**Lens**

Lens Type	Fixed
Mount Type	Board-in
Focal Length	3.6 mm
Max. Aperture	F2.0 / F2.0
Field of View	83°(H), 44°(V), 98°(D)
Focus Control	Fixed
Close Focus Distance	N/A

**PTZ**

Pan / Tilt Range	Pan: 0° ~ 360°; Tilt: 0° ~ 90°; Rotation: 0° ~ 360°
------------------	---

**Audio**

Compression	N/A
-------------	-----

**Network**

Ethernet	RJ-45 (10/100Base-T)
Wi-Fi	Wi-Fi(IEEE802.11b/g/n), 50m(open field)
Protocol	HTTP; HTTPS; TCP; ARP; RTSP; RTP; UDP; SMTP; FTP; DHCP; DNS; DDNS; PPPOE; IPv4/v6; QoS; UPnP; NTP; Bonjour; 802.1x; Multicast; ICMP; IGMP
Interoperability	ONVIF, PSIA, CGI
Streaming Method	Unicast / Multicast
Max. User Access	10 Users / 20 Users
Edge Storage	NAS (Network Attached Storage), Local PC for instant recording, 128GB
Web Viewer	IE, Chrome, Firefox, Safari
Management Software	Smart PSS, DSS, Easy4ip
Smart Phone	iPhone, iPad, Android Phone

**Interface**

Video Interface	N/A
Audio Interface	N/A
RS485	N/A
Alarm	N/A

**Video**

Compression	H.265 / H.264H / MJPEG (Sub Stream)
Streaming Capability	2 Streams
Resolution	1080P (1920×1080) / 1.3M (1280×960) / 720P (1280×720) / D1 (704×576/704×480) / VGA (640×480) / CIF (352×288/352×240)
Frame Rate	Main Stream: 1080P (1 ~ 25/30fps) Sub Stream: D1 (1 ~ 25/30fps)
Bit Rate Control	CBR / VBR
Bit Rate	H.265: 12K ~ 6400 Kbps H.264: 32K ~ 10240 Kbps
Day/Night	Auto(ICR) / Color / B/W
BLC Mode	BLC / HLC / DWDR
White Balance	Auto / Natural / Street Lamp / Outdoor / Manual
Gain Control	Auto / Manual
Noise Reduction	3D DNR
Motion Detetion	Off / On (4 Zone, Rectangle)
Region of Interest	Off / On (4 Zone)
Electronic Image	Support
Smart IR	Support
Digital Zoom	16x
Flip	0° / 90° / 180° / 270°
Mirror	Off / On
Privacy Masking	Off / On (4 Area, Rectangle)

**Certifications**

Certifications	CE (EN 60950:2000) UL: UL60950-1 FCC: FCC Part 15 Subpart B
----------------	---

**Electrical**

Power Supply	DC12V
Power Consumption	< 6.5W

**Warunki pracy**

Operating Conditions	-10°C ~ +50°C (-14°F ~ +122°F) / Less than 95% RH
Storage Conditions	-10°C ~ +50°C (14°F ~ +122°F) / Less than 95% RH
Ingress Protection	IP67
Vandal Resistance	N/A

**Construction**

Casing	Metal + Plastic
Dimensions	Φ70 mm× 164.7 mm (2.76"×6.49")
Net Weight	0.43 Kg (0.95lb)
Gross Weight	0.52 Kg (1.158lb)

Accessories (optional)

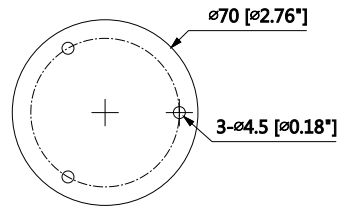
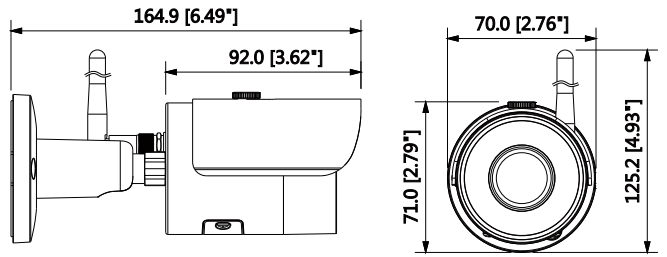


**PFA134**  
Juntion Box



**PFA150**  
Pole Mount

Dimensions (mm/inch)



Junction Mount	Pole Mount
PFA134	PFA134 + PFA150