

Product Information

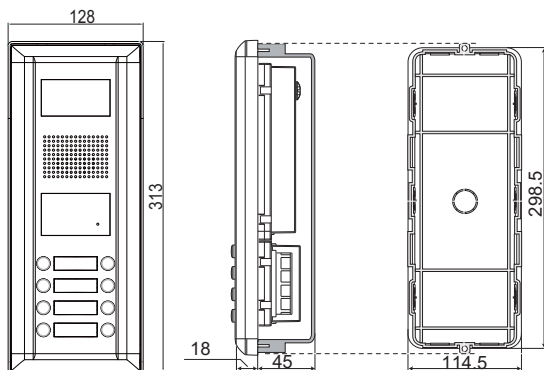
DMR11 Series 2-Wire Indoor Monitor



DESCRIPTION

2-wire apartment system color CCD outdoor station

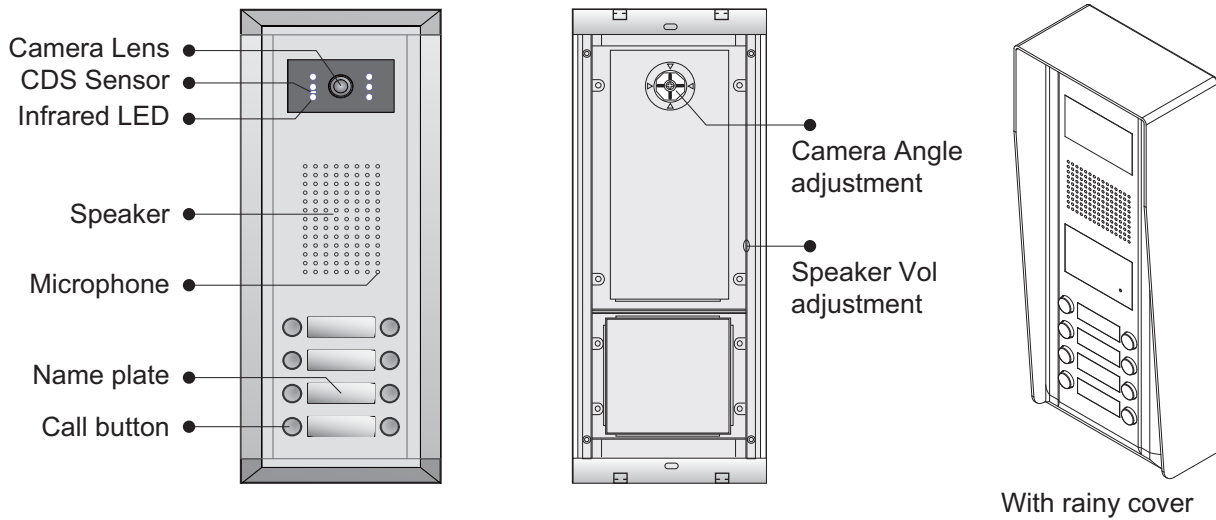
DIMENSION



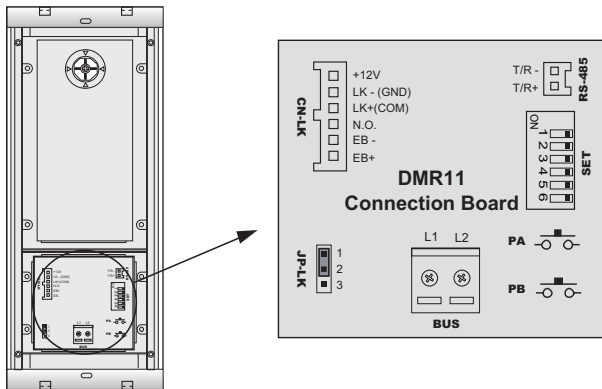
FEATURES

- ▶ Aluminum alloy panel design with direct selective buttons;
- ▶ Multi call buttons combination for choice;
- ▶ Color ARS Camera with high resolution;
- ▶ Camera's angle is adjustable;
- ▶ Proximity access control is optional(max.1000pcs EM cards);
- ▶ IP45 protection rate;
- ▶ Compatible with all DT two wire system model

1. Parts and Functions



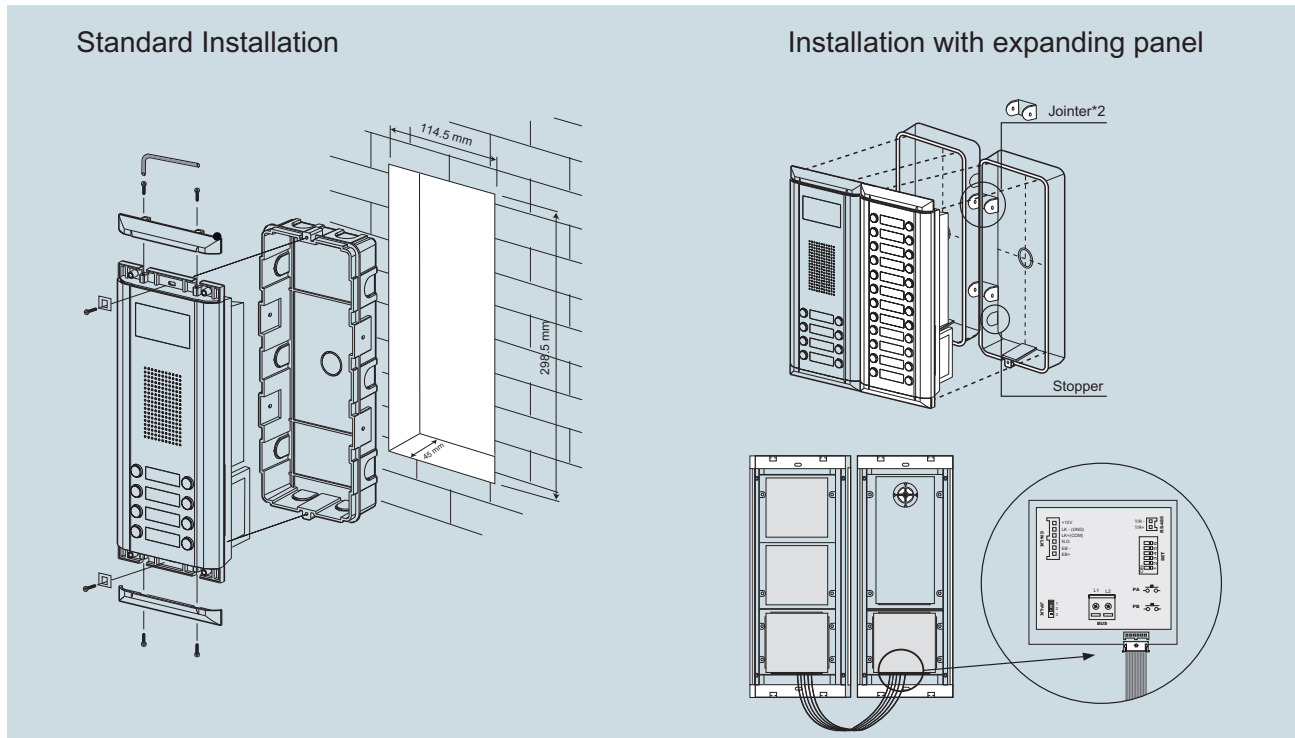
Terminal description



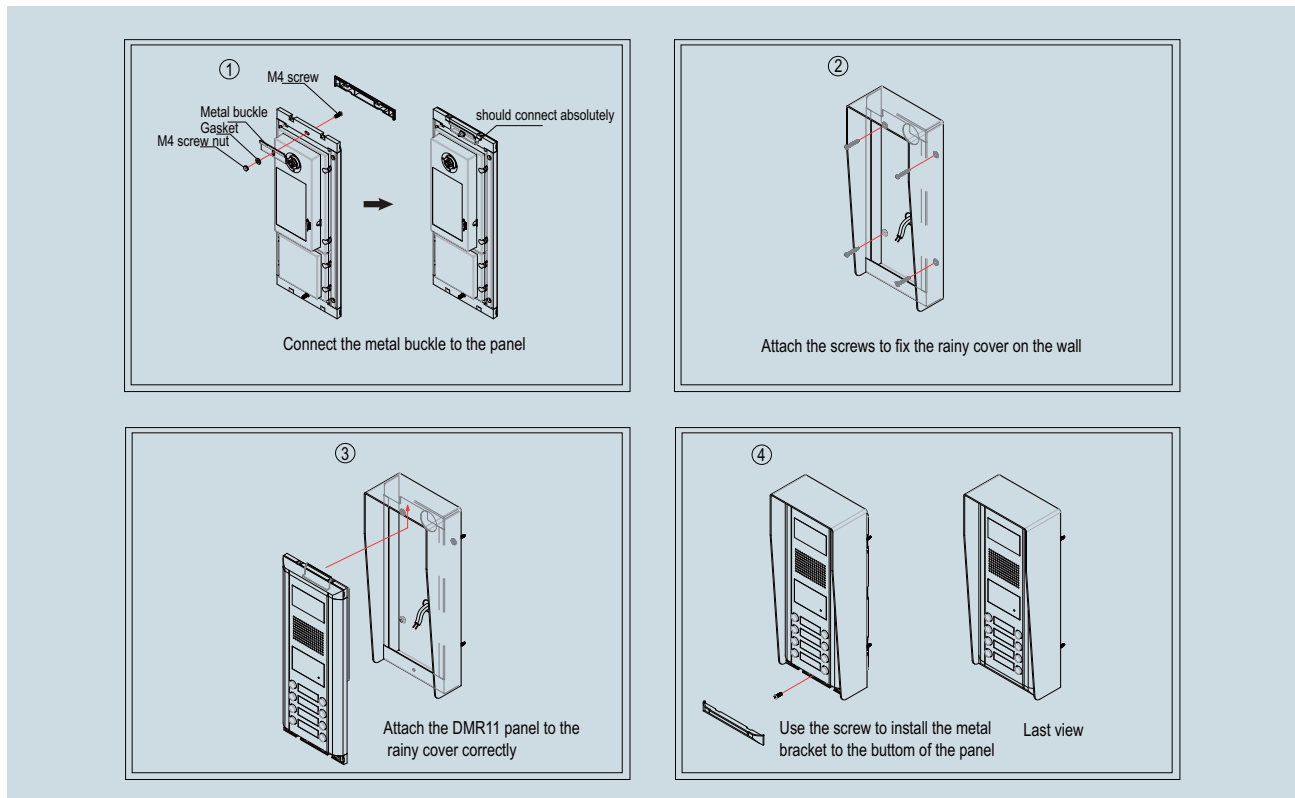
- **+12V**: 12VDC power output.
- **LK-(GND)**: power ground.
- **LK+(COM)**: Common contact of the Relay
- **NO.**: Normally open contact of the Relay(refer to DT technical guide for Lock connection detail informations).
- **EB+**: Exit button connection port.
- **EB-**: Exit buton connection port.
- **JP-LK**: For electronic lock safety type setting(refer to Door Station Lock Connections).
- **T/R-**: USB-RS485 communication terminal negative.
- **T/R+**: USB-RS485 communication terminal positive.
- **SET**: DIP switches for system configurations.
- **PA**: program button A(refer to program section).
- **PB**: program button B.(refer to program section).
- **Bus(L1,L2)**: non-polarised bus line.

2. Door Station Mounting

Mounting without rainy cover



Mounting with rainy cover

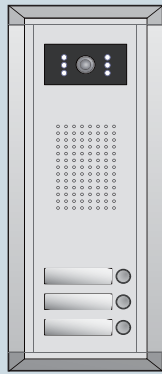


3. Specification

- * Power Supply : DC 24V (supplied by PS4-24V or PS5-24V);
- * Power Consumption: Standby 110mA; Working status 300mA;
- * Camera: Color CCD; 420 TV Lines;
- * Unlocking time: 1-99S, set by software;
- * Talking Time: 90S;
- * Lock Power supply: 12Vdc, 300mA(Internal Power);
- * Working Temperature: -10°C+45°C;
- * Wiring: 2 wires (non-polarity);
- * Dimension: 313(H)×128(W)×63(D)mm(with mount box)
313(H)×128(W)×70(D)mm(with rainy cover)

4. Ordering Information for Door Station

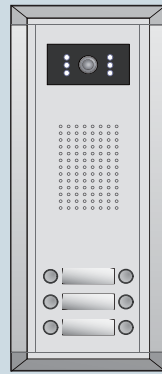
| Model No. | Brief Description | Remark |
|-------------|---|-----------------------------|
| DMR11/S3 | Color ARS camera outdoor station (3 buttons) | NSTC,PAL must be specified |
| DMR11/S4 | Color ARS camera outdoor station (4 buttons) | NSTC, PAL must be specified |
| DMR11/D6 | Color ARS camera outdoor station (6 buttons) | NSTC,PAL must be specified |
| DMR11/D8 | Color ARS camera outdoor station (8 buttons) | NSTC,PAL must be specified |
| DMR11/S3/ID | Color ARS camera outdoor station with proximity access control (3 buttons) | NSTC,PAL must be specified |
| DMR11/S4/ID | Color ARS camera outdoor station with proximity access control (4 buttons) | NSTC,PAL must be specified |
| DMR11/D6/ID | Color ARS camera outdoor station with proximity access control (6 buttons) | NSTC,PAL must be specified |
| DMR11/D8/ID | Color ARS camera outdoor station with proximity access control (8 buttons) | NSTC,PAL must be specified |
| EP11/S8 | Expended door station with 8 buttons | |
| EP11/S12 | Expended door station with 12 buttons | |
| EP11/D16 | Expended door station with 16 buttons | |
| EP11/D24 | Expended door station with 24 buttons | |



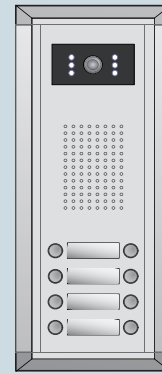
DMR11/S3



DMR11/S4



DMR11/D6



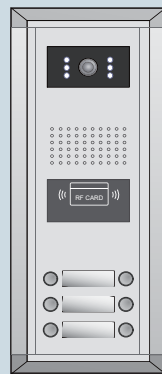
DMR11/D8



DMR11/ID/S3



DMR11/ID/S4



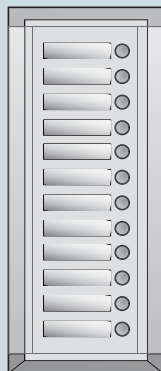
DMR11/ID/D6



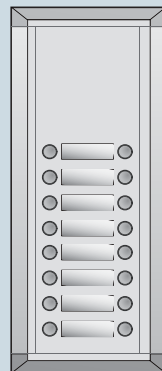
DMR11/ID/D8



EP11/S8



EP11/S12



EP11/D16



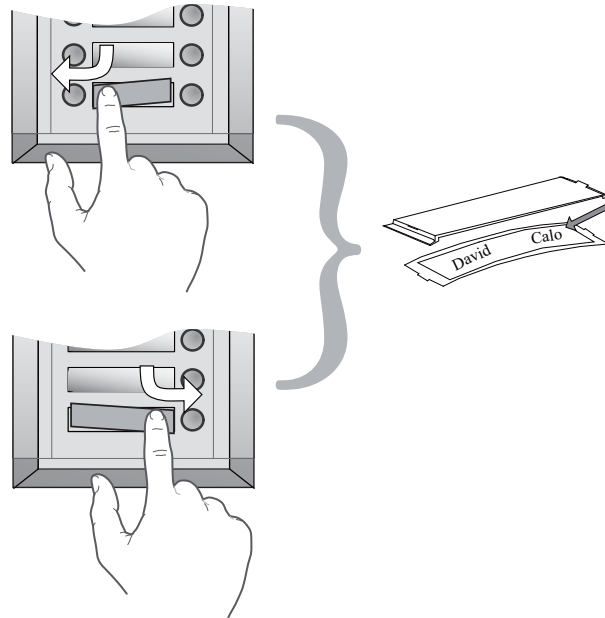
EP11/D24

5. Optional Accessories (Not included)

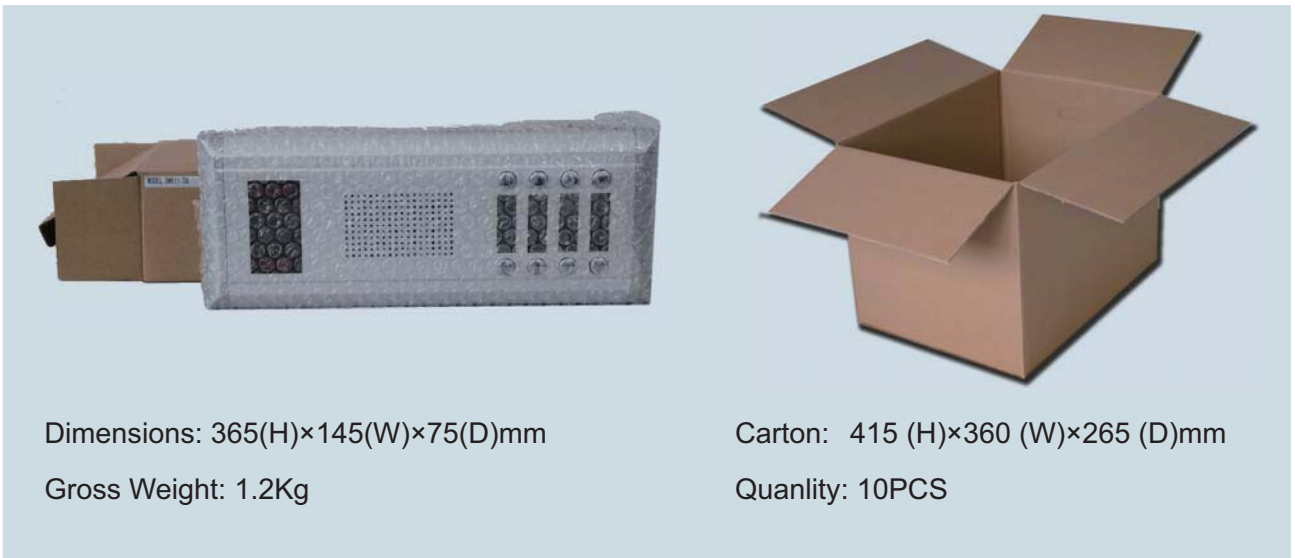
| Item | Brief Description | Remark |
|-----------|----------------------|--------|
| RH11 | Rain Cover for DMR11 | 1.01Kg |
| RS485-USB | RS485-USB converter | 0.20Kg |

5. Placing name label

Press down and move right or left to open the transparent nameplate cover, then insert the name paper, after that put the plate cover back to the panel. Please note that double button line panel can be opened both direction, single button line Can only be opened at right side.



5. Packing Information



Dimensions: 365(H)×145(W)×75(D)mm

Gross Weight: 1.2Kg

Carton: 415 (H)×360 (W)×265 (D)mm

Quantity: 10PCS