

# NV35MX

## Installation Manual V1.0

Outdoor/Indoor Window and  
Sliding Door Dual Detector with  
Anti-Masking and Pet Immunity

P ▲ R ▲ D O X™

NV35MX-EI01



### General Description

Thank you for choosing the NV35MX for your professional protection needs. The NV35MX EVO version will provide you the most advanced window and sliding door protection either in Pet Immune or Sharp mode, while programming can be done remotely via EVO bus connection. If you have any comments please write to us at [Paradox.com/products/feedback](http://Paradox.com/products/feedback). This guide describes how to install and program the NV35MX.

### Pet Recommended Installation (please read)

The NV35MX has been designed to be installed within the frame of windows and doors when installed outdoors. This will ensure the best performance against false alarms when random pets such as birds, cats and small dogs access the window sill. Other installation methods can be used with the NV35MX such as wall beam protection but if installed outside of the frame its pet immunity may be compromised.

### Installing the NV35MX

1. Remove the NV35MX front cover - open the Captive screw.

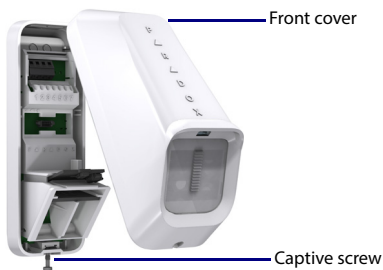


Figure 1 – Removing the Front Cover



Figure 2 – Main Unit

2. Remove the Main Unit: open the two snap-lock mechanisms on each side of the back cover attaching the Main Unit to the back cover as displayed below. Then remove the Main Unit.

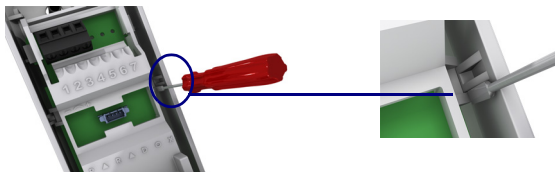


Figure 3 – Removing the Main Unit

3. Pull the wires from the control panel through the knockout holes and mount the back cover onto the window frame or wall using screws.

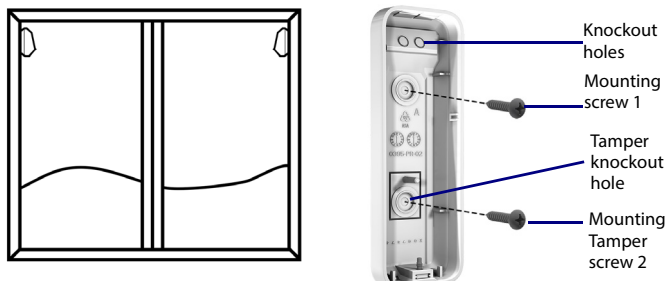


Figure 4 – Mounting the Back Cover

4. Attach the Main Unit to the back cover - ensure the locks snap closed.



Figure 5 – Attaching the Main Unit

5. Connect the wires to the terminal blocks according to the following wiring assignment.

Table 1: Wiring Assignment

Terminal Connector	Recommended Wiring Assignment	
	Bus Label	Wire Color
1	12V+	Red
2	Minus (-)	Black
3	Data	Green
4	Clock	Yellow

6. Replace the front cover and close the Captive screw.

**Warning: Do not obscure the detector's field of view.**

### Programming the NV35MX

Program the detector with a keypad or BabyWare software.

#### Programming with a Keypad

1. Enter EVO Installer Programming Mode.
2. Enter Module Programming:
  - a Enter section **[4003]** in the Enter Section field.
  - b Enter the detector's 8-digit **[SERIAL NUMBER]**.
  - c Enter the 3-digit **[SECTION]** number you want to program.
3. Program required functions in section **[001]** (table 2), section **[002]** (table 3) and section **[003]** (table 4) below.

Table 2: Section [001]

Bit	Function	Status/Description
[1]	LED Display Alarm	<b>ON:</b> Enabled ( <b>default</b> ) <b>OFF:</b> Disabled
[3]	LED Display Trouble	<b>ON:</b> Enabled ( <b>default</b> ) <b>OFF:</b> Disabled
[4]	LED Display Anti- Mask	<b>ON:</b> Enabled ( <b>default</b> ) <b>OFF:</b> Disabled
[5]	Anti- Mask	<b>ON:</b> Enabled ( <b>default</b> ) <b>OFF:</b> Disabled

Table 3: Section [002]

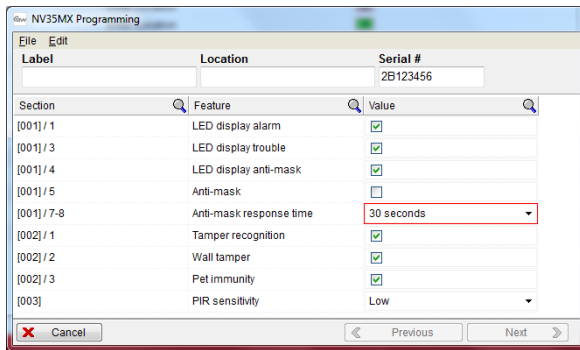
Bit	Function	Status/Description
[1]	Unit Tamper	<b>ON:</b> Enabled (default), <b>OFF:</b> Disabled
[2]	Wall Tamper	<b>ON:</b> Enabled (default), <b>OFF:</b> Disabled
[3]	PET Immunity	<b>ON:</b> Enabled (default) (PET Mode) <b>OFF:</b> Disabled (SHARP Mode)

Table 4: Section [003]

PIR Sensitivity Level		
<b>Low:</b> 00	<b>Normal:</b> 01 ( <b>default</b> )	<b>High:</b> 02

## Programming with BabyWare

1. Open BabyWare.
2. Select the detector and set zone type.
3. Right-click on the detector to open detector Programming.



4. Configure the required settings.

## Testing the NV35MX

Perform a Walk-Test to test successful installation: Walk slowly across the far end of the detection range. Ensure detection.

Walk test mode lasts 5 minutes after the tamper screw is closed.

## LED Display

Feature	LED Status Indicator
Tamper open	Green: ON for 0.3 seconds every 30 seconds
PIR sensitivity level setting	Green: Flashes 1-3 times according to the selected level
Alarm detection	Red: ON for 2 seconds
Booting/Tamper close	Green/Red alternating flashes for 30 seconds
Anti-mask detection	Orange: Flashes ON/OFF 3 times every 60 seconds

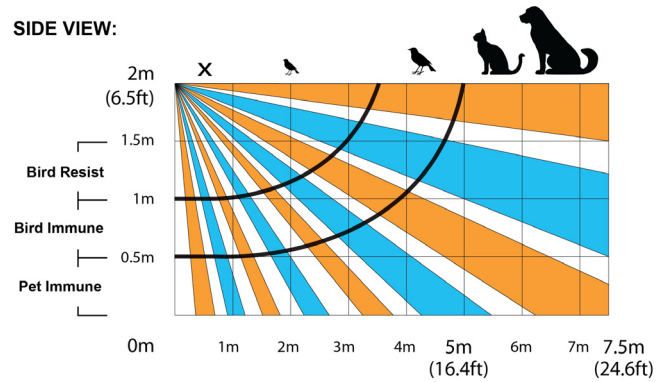
## Technical Specifications

Model Number	NV35MX
Infrared Sensor type	2 Dual elements
Detection range	<b>PET Immunity mode:</b> 7.5m x 2m (25 x 7 ft). <b>Sharp mode:</b> 10 x 2m (33 x 7 ft)
Super Pet Immunity	Pet size approximately 50cm
Anti- mask	Active IR detection for blocking 30cm and sprayed liquid
Input voltage	10 to 15 VDC
Current consumption	Typical: 15mA Maximum: 19.2mA
Compatibility	EVO systems
Outdoor protection	IP54
Operation temperature	-35°C to +50°C
Relative humidity	95% non-condensing
Dimensions	12.3 x 6.1 x 4.3 cm (4.8 x 2.4 x 1.7 in.)
Certifications	CE, EN50131-2-2 Grade 3, Class IV
Weight	100g / 0.2 lb

## Beam Pattern

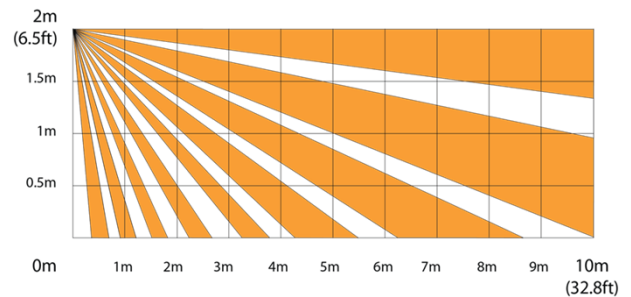
### PET Mode

SIDE VIEW:

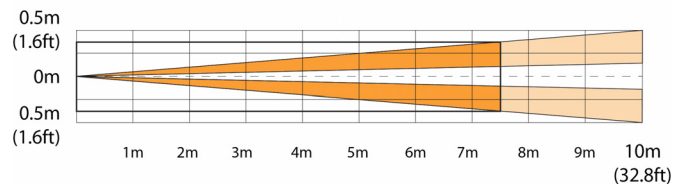


### SHARP Mode

SIDE VIEW:



### Top View



## PET Immunity Mode Installation



ENVY™  
SERIES



PET  
IMMUNITY



### Notifications

Changes or modifications to this equipment not expressly approved by the party responsible for compliance (Paradox Security Systems Ltd.) could void the user's authority to operate the equipment.

### Warranty

The Limited Warranty Statement found on the website [www.paradox.com/terms](http://www.paradox.com/terms).

### Patents

Your use of the Paradox product signifies your acceptance of these terms and conditions. The following US patents may apply 5,886,632 and 6,215,399. Other Canadian and international patents may apply.

Printed in Canada 08/2015

P ▲ R ▲ D O X™  
PARADOX.COM