

EN

Operating instructions

Hand transmitter HSE 4 BiSecur

Contents

1	About these instructions	15
2	Safety instructions	15
2.1	Intended use	15
2.2	Safety instructions for operating the hand transmitter ..	16
3	Scope of delivery.....	18
4	Description of the hand transmitter HSE 4 BiSecur ..	18
5	Initial start-up	19
5.1	Changing the battery.....	19
6	Operation	20
7	Learning and inheriting /transmitting a radio code. 20	20
7.1	Teaching in a radio code	21
7.2	Mixed operation / BiSecur and fixed code 868 MHz.....	22
8	Reset	22
8.1	Set the fixed code 868 MHz.....	22
9	LED display	23
10	Cleaning	24
11	Disposal	24
12	Technical data	24

Dissemination as well as duplication of this document and the use and communication of its content are prohibited unless explicitly permitted. Non-compliance will result in damage compensation obligations. All rights reserved in the event of patent, utility model or design model registration. Subject to changes.

Dear Customer,

We thank you for choosing a quality product from our company.

1 About these instructions

Read through all of the instructions carefully, as they contain important information about the product. Pay attention to and follow the instructions provided, particularly the safety instructions and warnings.

Further information about handling the hand transmitter can be found on the Internet at **www.hoermann.com**

Please keep these instructions in a safe place and make sure that they are available to all users at all times.

2 Safety instructions

2.1 Intended use

The HSE 4 BiSecur is a unidirectional transmitter for operators and their accessories. It can be operated with both the BiSecur radio and the fixed code 868 MHz.

Other types of application are prohibited. The manufacturer is not liable for damage caused by improper use or incorrect operation.

2.2 Safety instructions for operating the hand transmitter**WARNING****Danger of injury during door travel**

Persons may be injured by door travel if the hand transmitter is actuated.

- ▶ Make sure that the hand transmitters are kept away from children and can only be used by people who have been instructed on how the remote-control door functions!
- ▶ If the door has only one safety device, only operate the hand transmitter if you are within sight of the door!
- ▶ Only drive or pass through remote control door systems if the door is in the Open end-of-travel position!
- ▶ Never stand in the door's area of travel.
- ▶ Please note that unwanted door travel may occur if a hand transmitter button is accidentally pressed (e.g. if stored in a pocket / handbag).

**CAUTION****Danger of injuries due to unintended door travel**

- ▶ See warning in section 7

**CAUTION****Danger of burns from the hand transmitter**

If exposed to direct sunlight or great heat, the hand transmitter may heat up so much that burns could occur during use.

- Protect the hand transmitter from direct sunlight and great heat (e.g. by placing it in a stowage compartment in the dashboard).

ATTENTION**Malfunction due to environmental influences**

Non-compliance with these instructions can impair function!

Protect the hand transmitter from the following conditions:

- Direct sunlight (permissible ambient temperature: 0 °C to +60 °C)
- Moisture
- Dust

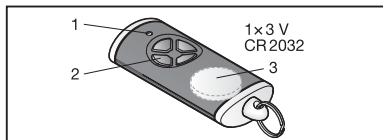
NOTES:

- If there is no separate garage entrance, perform all programming changes and extensions of radio systems from inside the garage.
- After programming or extending the radio system, perform a function test.
- Only use original components when putting the radio system into service or extending it.
- Local conditions may affect the range of the radio system.
- When used at the same time, GSM 900 mobile phones can affect the range.

3 Scope of delivery

- Hand transmitter HSE 4 BiSecur
- 1× 3 V battery, type: CR 2032
- Operating instructions

4 Description of the hand transmitter HSE 4 BiSecur

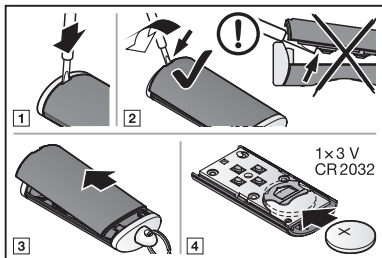


- 1 LED, bi-colour
- 2 Hand transmitter buttons
- 3 Battery

5 Initial start-up

After inserting the battery, the hand transmitter HSE 4 BiSecur is ready for operation.

5.1 Changing the battery



ATTENTION

Destruction of the hand transmitter by leaking batteries

Batteries can leak and destroy the hand transmitter.

- Remove the battery from the hand transmitter if it is out of use for a long period of time.

6 Operation

NOTE:

If the radio code for the taught-in hand transmitter was copied from another hand transmitter, the hand transmitter button must be pressed a second time during initial start-up.

Each hand transmitter button is assigned to a radio code. Press the button of the hand transmitter whose radio code you want to transmit.

- The radio code is transmitted and the LED is illuminated blue for 2 seconds.

NOTE:

If the battery is almost empty, the LED flashes red twice

- before transmitting the radio code.
 - ▶ The battery **should be** replaced soon.
- and the radio code is not transmitted.
 - ▶ The battery **must be** replaced immediately.

7 Learning and inheriting / transmitting a radio code



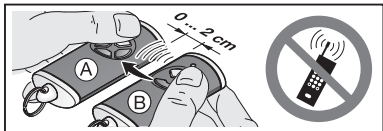
CAUTION

Danger of injuries due to unintended door travel

Unintended door travel may occur while teaching in the radio code.

- ▶ Make sure no persons or objects are in the door's area of travel when teaching in the radio system.

7.1 Teaching in a radio code



1. Hold hand transmitter **A**, that should be taught in the radio code, to the left of hand transmitter **B**.
2. Press the hand transmitter button on hand transmitter **B**, whose radio code is to be inherited, and keep it pressed.
 - The LED is illuminated blue for 2 seconds and then goes out.
 - After 5 seconds, the LED alternates flashing in red and blue.
 - The hand transmitter sends the radio code.
3. Press the hand transmitter button on hand transmitter **A**, that should be taught in the radio code, and keep it pressed.
 - The LED is illuminated blue for 2 seconds and then goes out.
 - The LED will flash slowly in blue.
 - If the radio code is recognised, the LED flashes quickly in blue.
 - After 2 seconds, the LED goes out.
4. Release the hand transmitter button.
The radio code of the hand transmitter button has been taught in.

NOTE:

You have 15 seconds to inherit/transmit the code. The process must be repeated if the radio code is not successfully inherited/transmitted within this time.

7.2 Mixed operation / BiSecur and fixed code 868 MHz

If the BiSecur radio has been set, mixed operation with HSE 4 BiSecur hand transmitters is possible, i.e. existing hand transmitters with an 868 MHz fixed code (grey hand transmitters with blue buttons or the device designation HSD2-868) can be taught in from the BiSecur hand transmitter.

8 Reset

Each hand transmitter button is assigned to a new radio code by means of the following steps.

1. Open the hand transmitter housing and remove the battery for 10 seconds (see section 5.1).
2. Press a circuit board button and keep it pressed.
3. Insert the battery.
 - The LED slowly flashes in blue for 4 seconds.
 - The LED flashes rapidly in blue for 2 seconds.
 - The LED is illuminated blue for a long time.
4. Release the circuit board button.
All radio codes are newly assigned.
5. Close the hand transmitter housing.

NOTE:

If the circuit board button is released prematurely, no new radio codes are assigned.

8.1 Set the fixed code 868 MHz.

If immediately following the device reset, the circuit board button remains pressed, the fixed code 868 MHz will be activated.

- The LED slowly flashes in red for 4 seconds.
- The LED flashes rapidly in red for 2 seconds.
- The LED is illuminated red for a long time.

All radio codes are newly assigned.

NOTE:

If the hand transmitter button is released prematurely, the BiSecur radio will remain active.

Further information about operating the hand transmitter with the fixed code 868 MHz can be found on the Internet at **www.hoermann.com**

9 LED display

Blue (BU)

Condition	Function
Illuminated for 2 seconds	A radio code is being transmitted
Flashes slowly	Hand transmitter is in the learn mode
Flashes quickly after slow flashing	A valid radio code was detected during the learning run
Flashes slowly for 4 seconds Flashes quickly for 2 seconds Illuminated long	Device reset is being performed or completed

Red (RD)

Condition	Function
Flashes 2×	The battery is almost empty

Blue (BU) and Red (RD)

Condition	Function
Flashing alternately	Hand transmitter is in inherit / transmit mode

10 Cleaning

ATTENTION

Damaging the hand transmitter by faulty cleaning

Cleaning the hand transmitter with unsuitable cleaning agents can damage the hand transmitter housing as well as the hand transmitter buttons.

- Clean the hand transmitter with a clean, soft, damp cloth.

11 Disposal

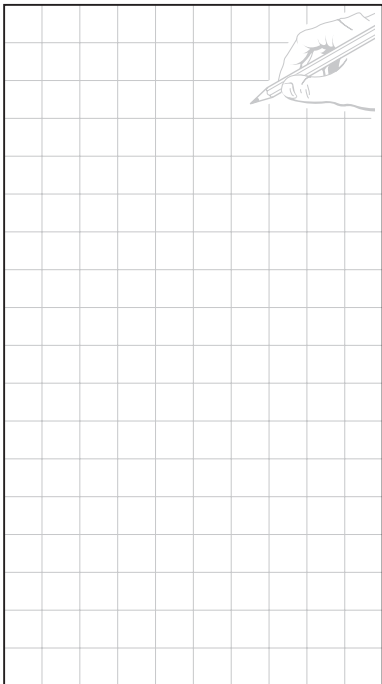


Electrical and electronic devices as well as batteries may not be disposed of in household rubbish. They must be returned to the appropriate recycling facilities.



12 Technical data

Type	Hand transmitter HSE 4 BiSecur
Frequency	868 MHz
Power supply	1 × 3 V battery, type: CR 2032
Perm. ambient temperature	0 °C to +60 °C
Protection category	IP 20





TR20A229 DX/05.2016



HÖRMANN KG
Verkaufsgesellschaft
Upheider Weg 94-98
D-33803 Steinhagen
www.hoermann.com