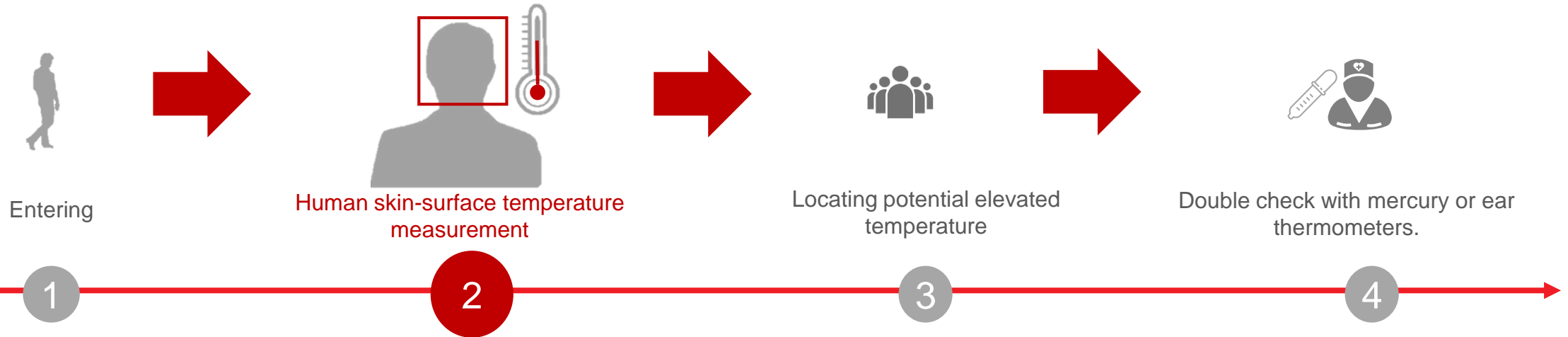




# Hikvision Temperature Screening Solution

# Solution Business Flow



Fast preliminary temperature screening without contact



**S**AFE

Distant and accurate check without physical contact, reducing cross-infection possibilities.

**E**FFICIENT

Automatic alarm triggering, reducing manpower invested.

**A**DAPTABLE

Multiple product types, easy to deploy, and suitable for different scenarios.

**T**RACEABLE

Combining temperature, image and face identification for easy management and query.

# Solution Overview

## Solution 1

## Temperature Screening with Fast Deployment



- ✓ Entrances with short-term requirements
- ✓ Unsuitable for complicated wiring and installation



### 1-1 Thermographic Cameras

Visualized Bi-spectrum Live View



■ With Thermographic Camera



### 1-2 Wireless Devices

Easy Connection, Cable Free



■ With Handheld Thermographic Camera



### 1-3 Metal Detector Doors

Real-time Sound and Light Alarm



■ With Metal Detector Door

# Solution Overview

## Solution 2 Temperature Screening with Access Control



- ✓ Indoor space without wind
- ✓ Security control and Temperature screening at the entrance which has a route to guide people flow



Touch-Free, Access is Easier but Safer



- With MinMoe Wall-Mounting Touch-free Temperature Screening Terminal

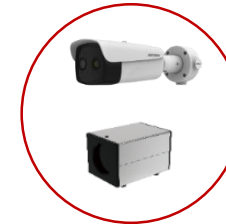
## Solution 3 Group Temperature Screening



- ✓ Indoor open space without wind
- ✓ Large people flow
- ✓ Temperature screening on crowds



High-risk Group Screening with High Efficiency



- With Thermographic Bullet Camera



# Solution Overview

## Solution 4

### Temperature Screening on Patrol



- ✓ Indoor open space without wind
- ✓ Patrolling without a fixed route



Anytime, Anywhere, Just one click.



- With Handheld Thermographic Camera

## Solution 5

### Temperature Screening & Mask Detection



- ✓ Indoor open space without wind
- ✓ Face recognition with mask on



Intuitive Demonstration



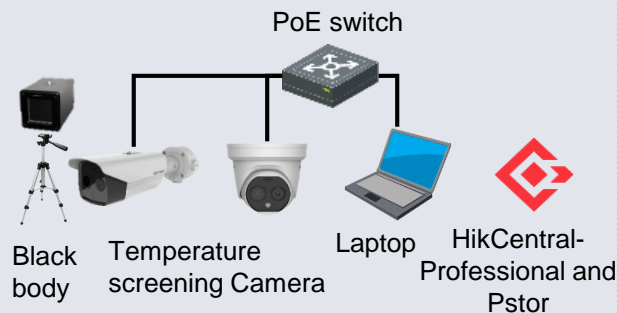
- With Thermographic Camera & DeepinMind NVR

# Temperature Screening with Fast Deployment – Thermographic Cameras

## Visualized Bi-spectrum Live View

### Solution Introduction

- Indoor space without wind
- Route for passenger flow is recommended
- 5 minutes' stay after entrance is recommended
- Use the Black Body calibrator to improve the accuracy to  $\pm 0.3^{\circ}\text{C}$
- Local video storage** with HikCentral & pStor, no need for NVR

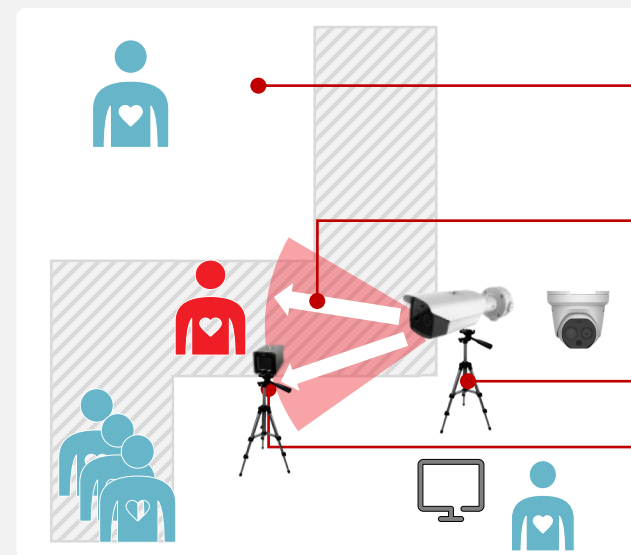


### Product Design



DS-2TD1217B-3/6 PA  
DS-2TD2617B-3/6 PA

- Thermal:  $160 \times 120$ , lens: 3 mm / 6 mm
- Optical:  $2688 \times 1520$ , lens: 4 mm / 8 mm
- Accuracy:  $\pm 0.5^{\circ}\text{C}$  ( $\pm 0.3^{\circ}\text{C}$  with black body)**
- Measurement range:  $30\text{--}45^{\circ}\text{C}$
- Working temperature:  $10\text{--}35^{\circ}\text{C}$
- Embedded **audio alarm** for abnormal temperatures
- AI detection to reduce false alarms by other heat resources**



Double check by **mercury thermometer, ear thermometer etc.**

Distance between camera and people: 0.8-1.5 m (3 mm lens)  
1.5-3 m (6 mm lens)

Installation height is 1.5 m

Distance between camera and Black Body calibrator: 1 m (3 mm lens), 2 m (6 mm lens). Keep the Black Body in the upper left / upper right corner of the camera's view

# Temperature Screening with Fast Deployment - Wireless Devices

Easy Connection, Cable Free

## Solution Introduction



- For building entrances, elevator halls, airport security checks, etc.
- **Wireless** deployment without cables (by the app or the iVMS-4200 client)
- **Indoor space** without wind
- **Route for passenger flow is recommended**
- **5 minutes' stay after entrance is recommended**



Tripod



Handheld thermographic camera



Hik-Thermal app



Laptop



iVMS-4200



Handheld thermographic camera



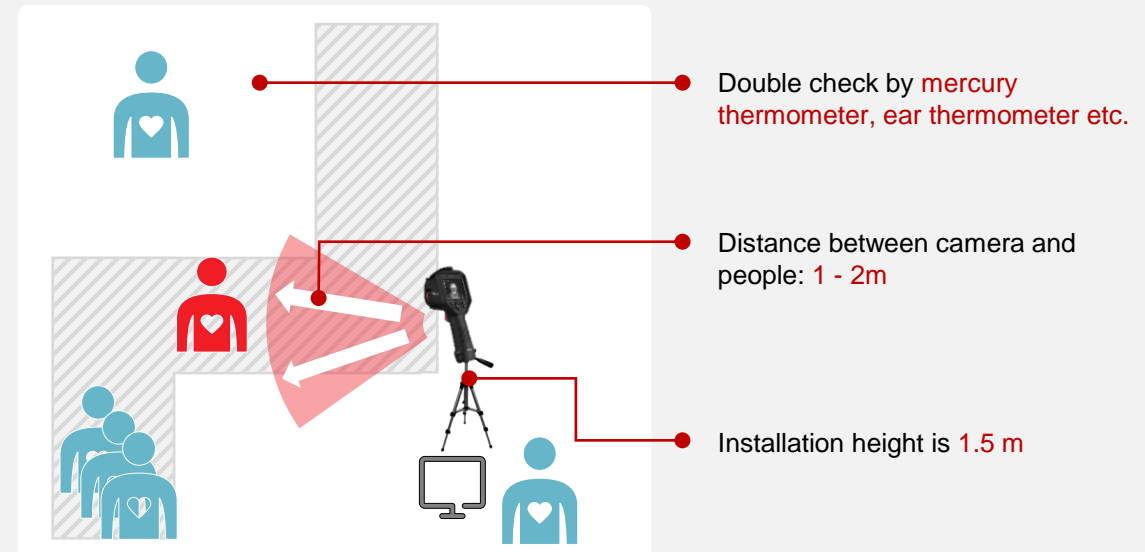
Hotspot

## Product Design



DS-2TP21B-6AVF/W

- Thermal resolution: 160 × 120 ;
- Optical resolution: 640 × 480 ;
- **Accuracy:  $\pm 0.5^{\circ}\text{C}$**
- Measurement range: 30-45 $^{\circ}\text{C}$
- 3.5" LCD touch screen
- Supports **Wi-Fi hotspot**, live view on PC or mobile client for less eye fatigue
- Supports real-time audio alarm and automatic uploading of screen captures

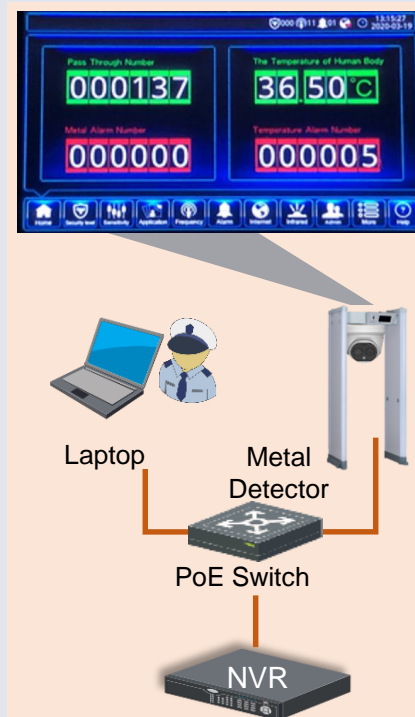
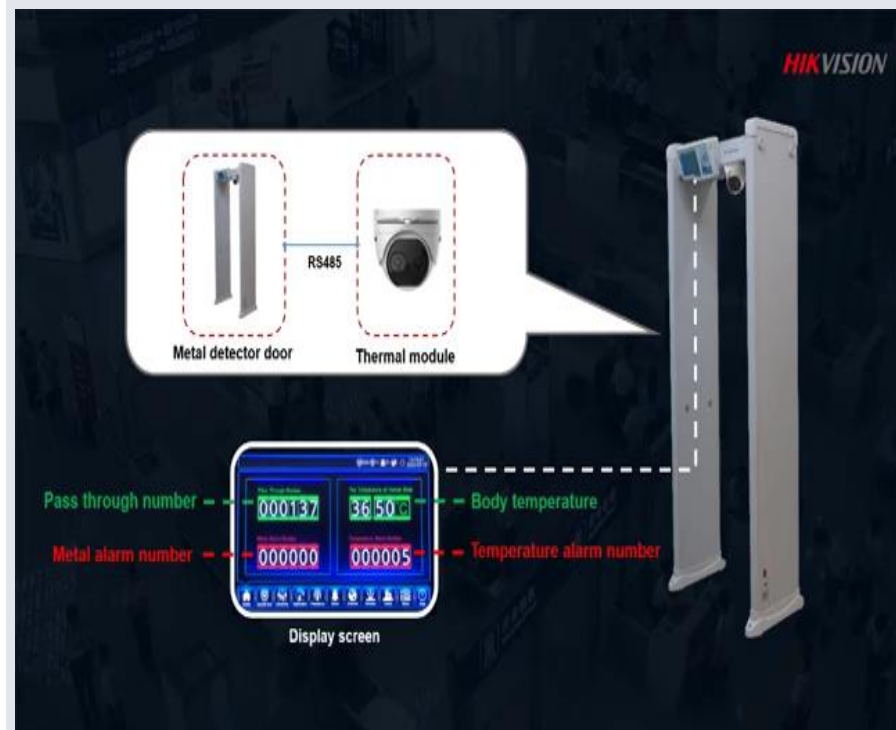


## Temperature Screening with Fast Deployment – Metal Detector Doors

Real-time Sound and Light Alarm

### Solution Introduction

- Long-term Temperature screening with metal detector door for entrances of police station, subway station, airport security check, etc.
- Indoor space without wind.
- Thermographic turret camera fixed on walk-through metal detector door.

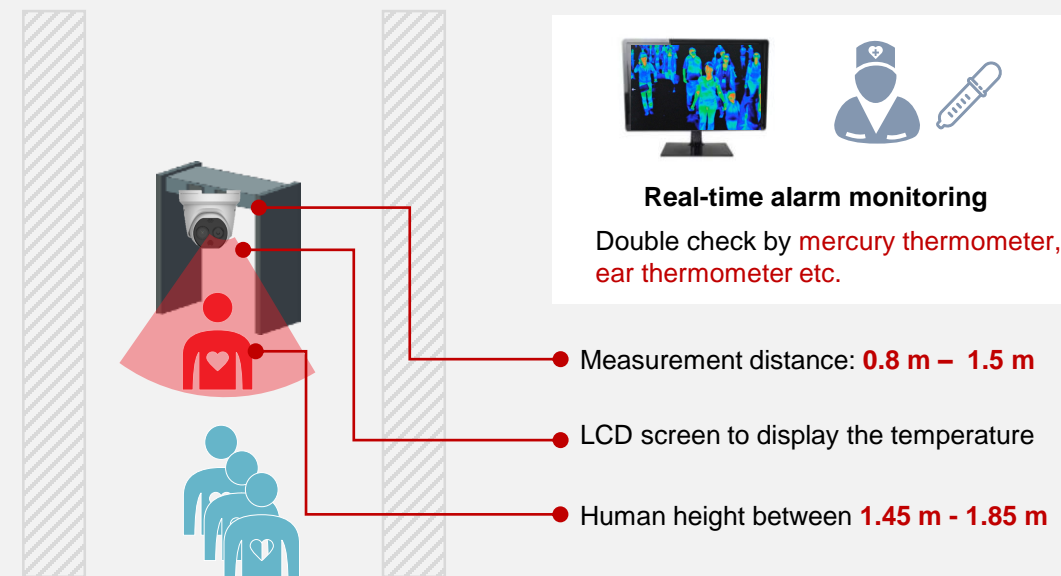


### Product Design



#### ISD-SMG318LT-F

- 18 independent detection zones,
- 7-inch LCD temperature indicator
- 2,200 mm \* 850 mm \* 480 mm
- Thermal imaging resolution: 160 \* 120
- Temperature measurement accuracy:  $\pm 0.5^{\circ}\text{C}$
- Temperature measurement range:  $30\text{--}45^{\circ}\text{C}$
- Onboard audio alarm for abnormal temperature or metal.

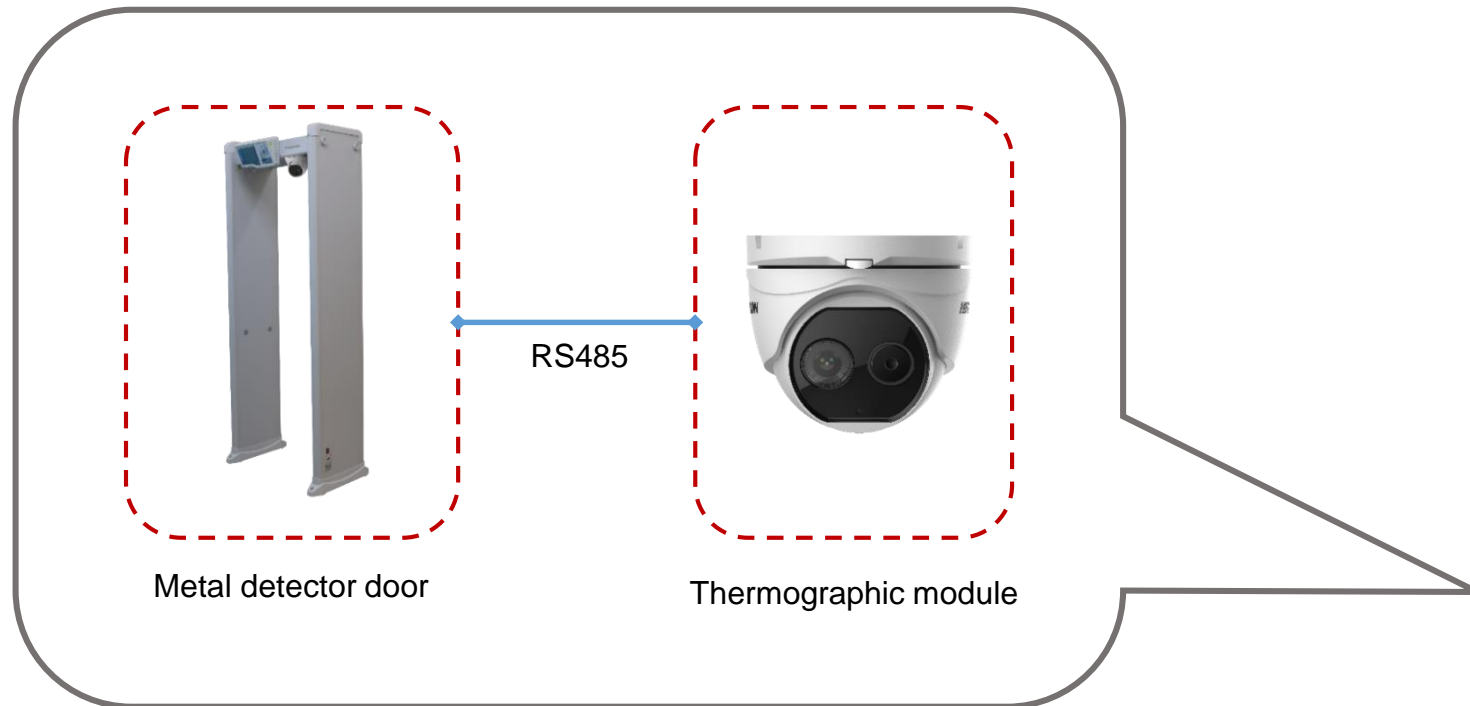




# Solution Introduction

**HIKVISION**

## Solution topology diagram



Management Center



NVR



UTP

UTP

Local Area Network(TCP/IP)



Temperature screening metal detector door solution

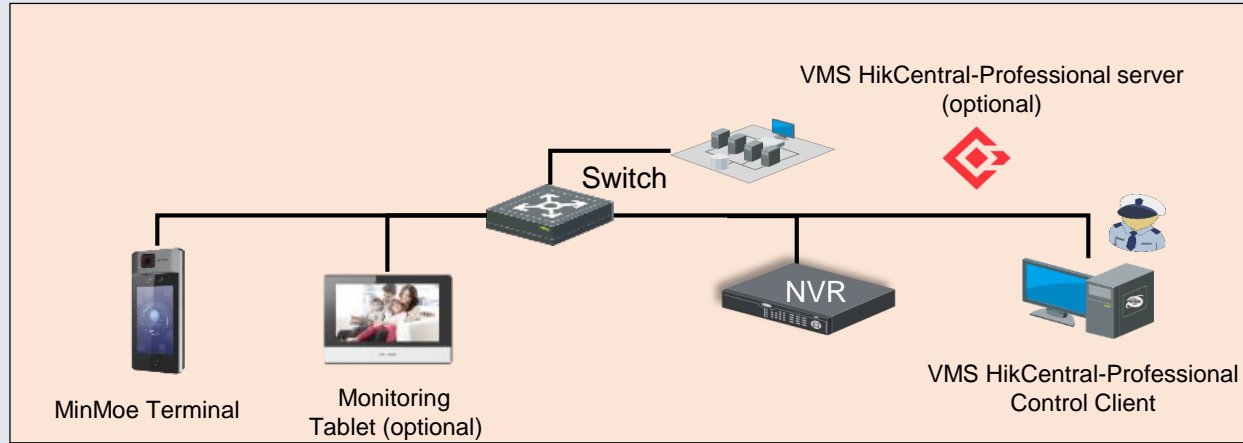
# 2

## Temperature Screening with Access Control

Touch-Free, Access is Easier but Safer

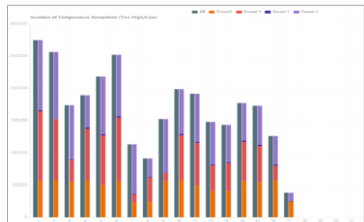
### Solution Introduction

- Long-term Temperature screening with access control for building related projects
- Indoor space
- Centralized management for access control with temperature records



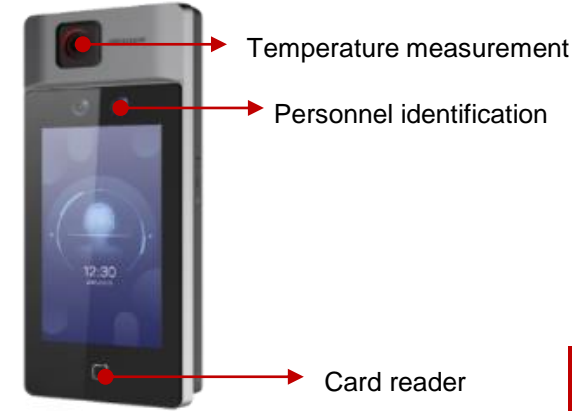
**VMS Centralized management for access control system support:**

- ① Exportable access records with temperature statistics
- ② Handling real-time Temperature alarms and tracing back records
- ③ Centralized management for multiple screening sites



Basic Information								
Export Time: 2020/02/10 15:01:28								
Exported by: admin								
Export Content: Name, ID, Card Number, Person Group, Device Time, Access Point, Access Result, Access Mode, Body Temperature								
Report Time: 2019/10/22 00:00:00 - 2019/10/22 23:59:59								
Total Number: 86								
Name	ID	Card Number	Person Group	Device Time	Access Point	Access Result	Access Mode	Body Temperature
John Johnson	34564352	1232134341	Sales	2019/10/22 20:37:41	605Door 01_Cardreader 01	Succeed	Face Recognition	36.5°C
Black Griffin	34234913	2332123343	Sales	2019/10/22 19:56:34	605Door 01_Cardreader 01	Failed	Face Recognition Failed	36.3°C
Tim Duncan	89218471	2439278394	Sales	2019/10/22 19:53:22	605Door 01_Cardreader 01	Failed	Temperature higher than threshold	37.7°C
Roger Federer	21231234	2456457545	Manager	2019/10/22 18:36:43	605Door 01_Cardreader 01	Succeed	Face Recognition	36.7°C

Note: The NVR and HikCentral are both customized in this solution.



Normal temperature



Abnormal temperature

**Double check by mercury thermometer, ear thermometer etc.**

### Product Design

- 7-inch LCD touch screen, 2 Mega pixel wide-angle lens
- Built-in Mifare card reading module;
- Max.50,000 faces capacity, Max.50,000 cards;
- **Temperature range: 30-45°C, accuracy:  $\pm 0.5^\circ\text{C}$ ;**
- Supports 6 attendance status, including check in, check out, break in, break out, overtime in, overtime out
- **Face Recognition Duration(1:N)  $\leq 0.2\text{s}$**
- Authentication Distance: 0.5m ~ 1.5m



MinMoe Terminal  
DS-K1T671TM-3XF

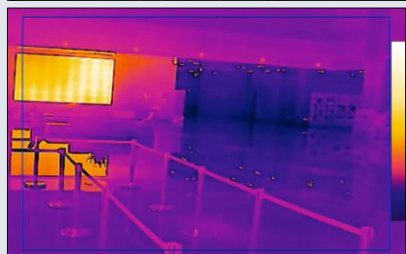
# 3

## Group Temperature Screening

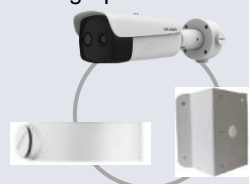
High-risk Group Screening with High Efficiency

### Solution Introduction

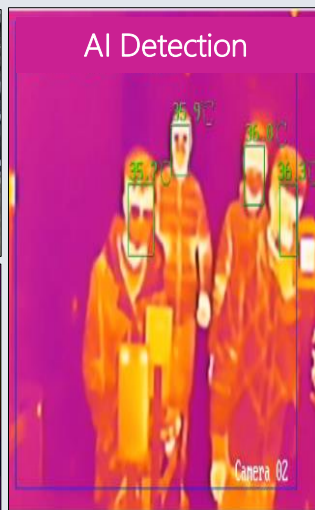
- Temperature screening of crowd with high efficiency (indoor), simultaneous Temperature screening of multiple people
- The Black Body calibrator is used to improve the accuracy to  $\pm 0.3^{\circ}\text{C}$
- Centralized management for CCTV with temperature record



Thermographic Bullet Camera



Wall Mounted Bracket



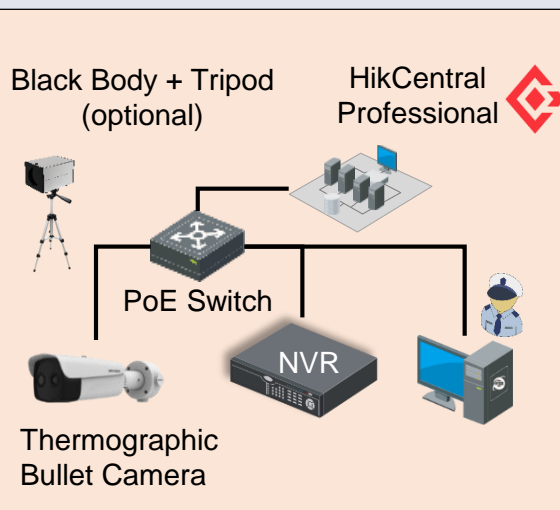
AI Detection



PoE switch



HikCentral Professional



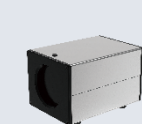
Black Body + Tripod (optional)

HikCentral Professional

PoE Switch



Thermographic Bullet Camera



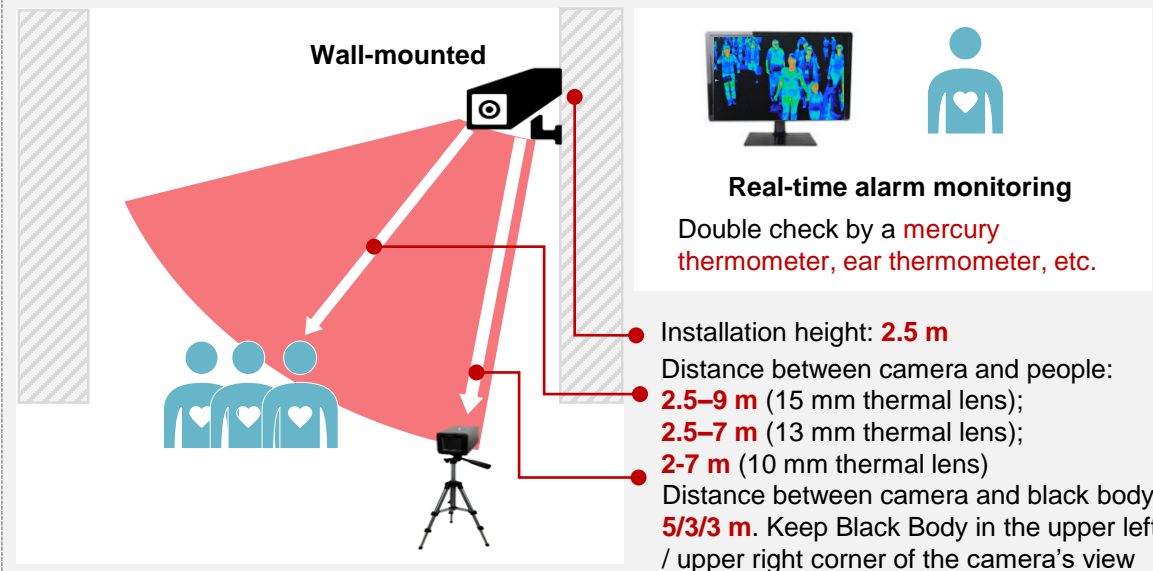
Black Body + Tripod (optional)

### Product Design

- Thermal:  $384 \times 288$ , lens: 10/13/15 mm
- Optical:  $2688 \times 1520$ , lens: 4/6/6 mm
- **Accuracy:  $\pm 0.5^{\circ}\text{C}$**
- Measurement range:  $30\text{--}45^{\circ}\text{C}$
- Working temperature:  $10\text{--}35^{\circ}\text{C}$
- **AI detection to reduce false alarms**



DS-2TD2636B-15/P  
DS-2TD2636B-13/P  
DS-2TD2637B-10/P



Note: The NVR and HikCentral are both customized in this solution.

# 4

## Temperature Screening on Patrol

Anytime, Anywhere. Just One Click

### Solution Introduction

- For preliminary Temperature screening by spot-checking inspectors (**indoor**)
- Temperature screening without disturbing a person



Hik-Thermal app



iVMS-4200



Handheld Thermographic camera



Hotspot



### Product Design

- Thermal resolution: 160 × 120;
- Optical resolution: 640 × 480;
- **Accuracy:  $\pm 0.5^{\circ}\text{C}$**
- Measurement range: 30-45°C
- 3.5" LCD touch screen
- Supports **Wi-Fi hotspot**, automatic screenshots of a person with Temperature & uploading to the Mobile Client (Hik-Thermal) as evidence
- Supports real-time **audio alarm**
- Operation time: **4-5 hours**



DS-2TP21B-6AVF/W



1 m - 2 m



If abnormal



Double check





# 4

## Short-term Temperature Screening at Entrances – Handheld Camera Based

Anytime, Anywhere, Just One Click

### Solution Details

- For preliminary fever screening by spot-checking inspectors (**indoor**)
- Fever screening without disturbing a person occupied with work
- Recommend to do the measurement **5 mins after** a person enters the indoor space



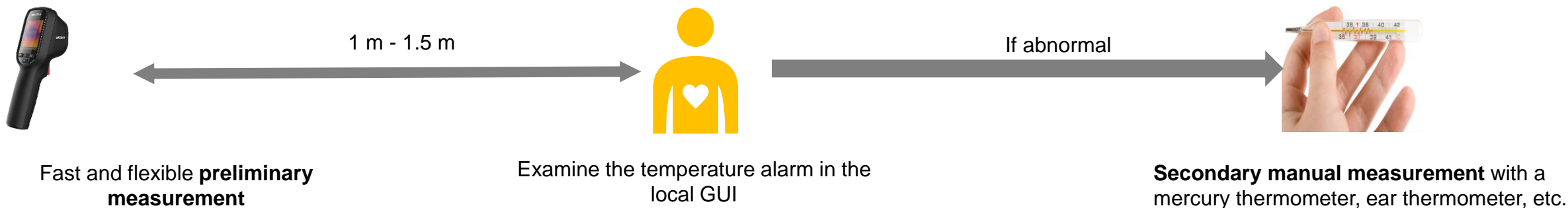
### Product Information

- Thermal resolution: 160 × 120;
- **Accuracy:  $\pm 0.5^{\circ}\text{C}$**
- 320 × 240 resolution 2.4" LCD display
- Measurement range: 30-45°C
- Operation time: up to **8 hours continuous running**
- Built-in rechargeable Li-ion battery (No spare battery)



DS-2TP31B-3AUF

➤ TP31 doesn't support Wi-Fi function, so it can't connect to the IVMS 4200 or Mobile APP.



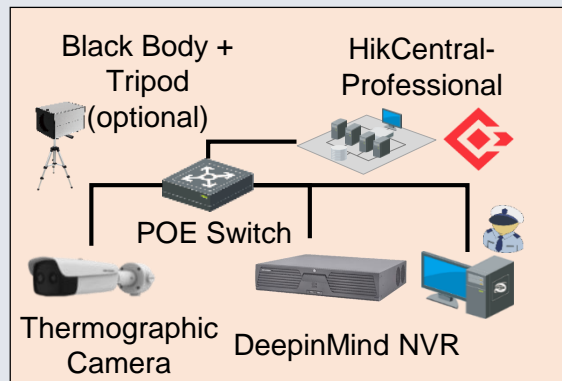
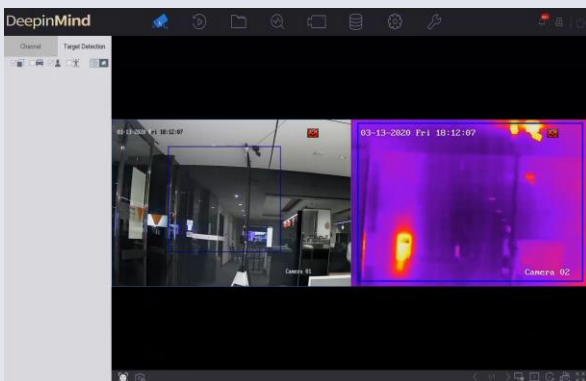
# 5

## Temperature Screening & Mask Detection

### Intuitive Demonstration

#### Solution Introduction

- **Temperature Screening:** Simultaneous Temperature screening for multiple persons (indoor), contact-free
- **Mask Detection:** Detecting whether people wear masks, and timely giving alarms on people without masks
- **Identity Verification & Stranger Alarm:** Confirming identity, **even with mask**, and giving alarms on strangers



Thermographic Camera



DeepinMind NVR

DS-2TD2617B-3/6PA DS-2TD2637B-10/P  
DS-2TD2636B-15/P DS-2TD1217B-3/6PA  
DS-2TD2636B-13/P

iDS-9616(/32)NXI-I8/X(B)(STD)(T)  
iDS-7716(/32)NXI-I4/(16P)/X(B)(STD)(T)  
iDS-6708NXI-I/8F(B)(STD)(T)

#### Product Design



- **Number of People:** total number, abnormal temperature, no mask, normal temperature



- Temperature Status
- Facial Recognition Results
- Mask Detection

#### ➤ Visualized GUI & Voice Broadcast:

- Special interface in DeepinMind NVR, visually displaying all kinds of information
- Supporting voice broadcast upon mask and temperature status

#### ➤ Efficient Search & Report:

- Fast video search of target people, such as people with abnormal temperatures, without masks and so on;
- Exporting reports with ID, skin-surface temperature and mask status

# Advantages of Hikvision's Thermographic Fever Screening Solutions

## AI Human Body Detection

Hikvision Bullet/Turret Fever Screening Thermographic Cameras feature AI human body detection to fix the measurement areas to human bodies, thus reducing false alarms caused by other heat sources.

## Embedded Audio Alarms

With a built-in audio module, Hikvision Bullet/Turret Fever Screening Thermographic Cameras can trigger alarms to notify operators immediately when a person with a fever passes by.



## Unique Self-developed Algorithm

Benefitting from Hikvision's self-developed temperature measurement algorithm and big data obtained by lots of cases, the accuracy of temperature measurement is highly reliable.

## One-Stop Solution

As a world's leading security solution provider, Hikvision offers a rich product portfolio including thermographic cameras, NVR, switches, etc., which is easier for clients to set up a complete and professional solution.

# Mask Detection Solution





# Mask Detection with Camera

HIKVISION®

## Public Transportation & Retail Shop

Live Mask Detection, Friendly Audio Notification

- Simpler
- Easier
- Convenient



## Product Information

- AI Mask detection
- Up to 8MP resolution
- Powered by Darkfighter
- 120dB WDR
- Strobe Light & Audio Alarm
- Built-in speaker
- PoE(802.3af)

Recommend:



- DS-2CD2T86G2-ISU/SL



- DS-2CD2386G2-ISU/SL

# Mask Detection with Thermal Camera

**HIKVISION**

Public Transportation & Retail Shop

Product Information



DS-2TD1217B-3/6 PA  
DS-2TD2617B-3/6 PA

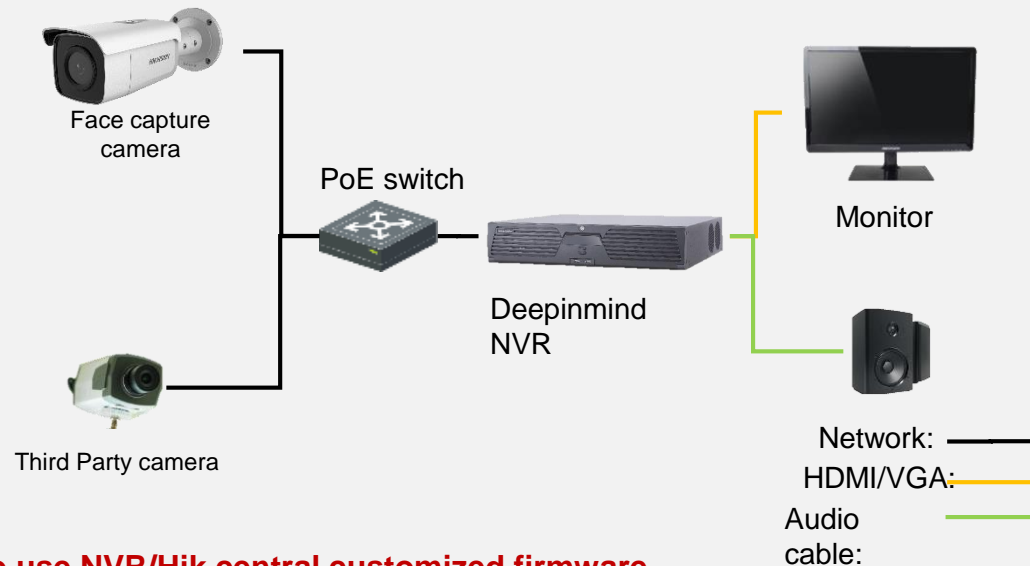
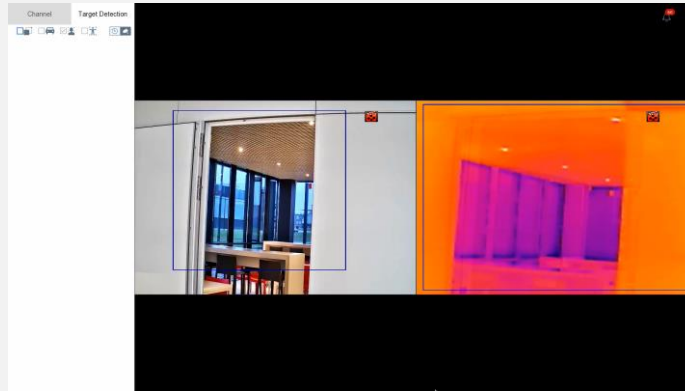
- AI Detection for Fast Temperature Screening
- Audio Warning For Abnormal Temperature

# Mask Detection With DeepinMind NVR

HIKVISION

## Solution Details

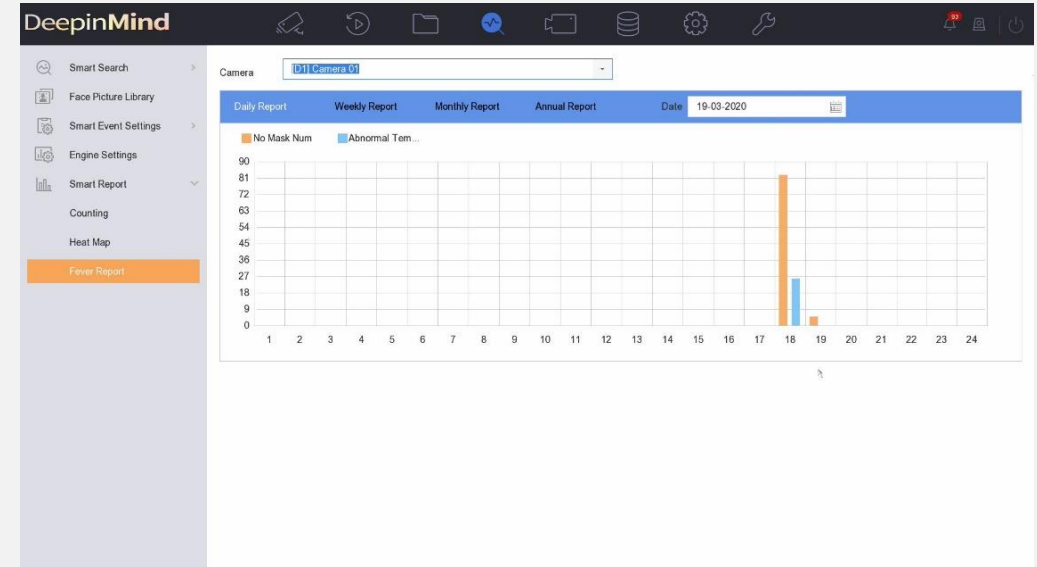
- **Mask Detection**
- **No Mask alarm on Local & Hik central**
- Visualized GUI
- Real time **Audio** Notification (HDMI/audio out)
- Efficient Search by Face attributes(Mask etc. )



**Note:**  
**Need to use NVR/Hik central customized firmware**  
**The Speaker needs to support RCA input**

## Product Information

- Up to 12MP resolution access
- Support up to 16 channels **Mask detection**
- Face comparison with People wearing mask
- **Real time audio notification for Not wearing Mask**
- **No mask people report**

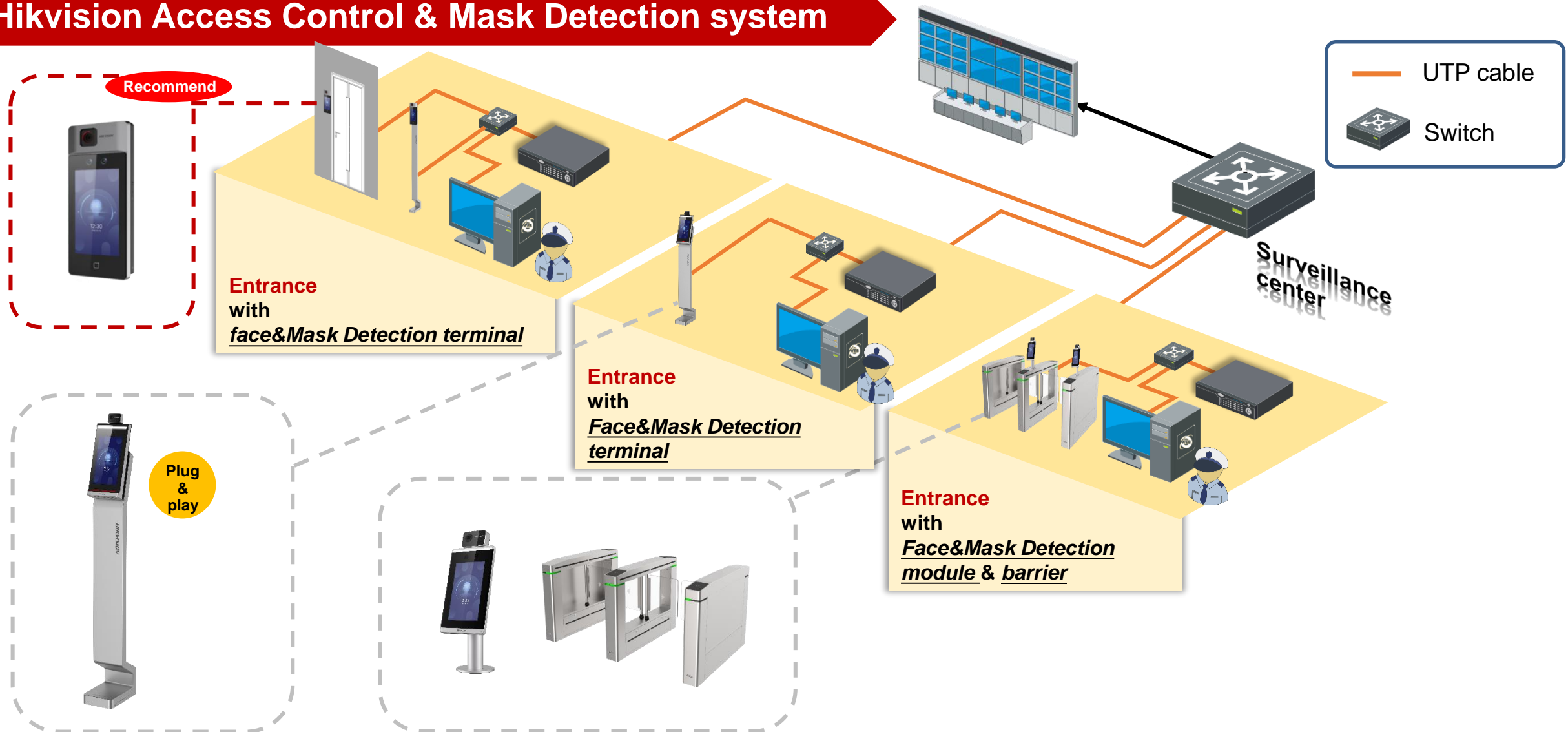




# Mask Detection With Access Control Terminal

HIKVISION

## Hikvision Access Control & Mask Detection system





# Products Showcase

**HIKVISION**

## Products Overview

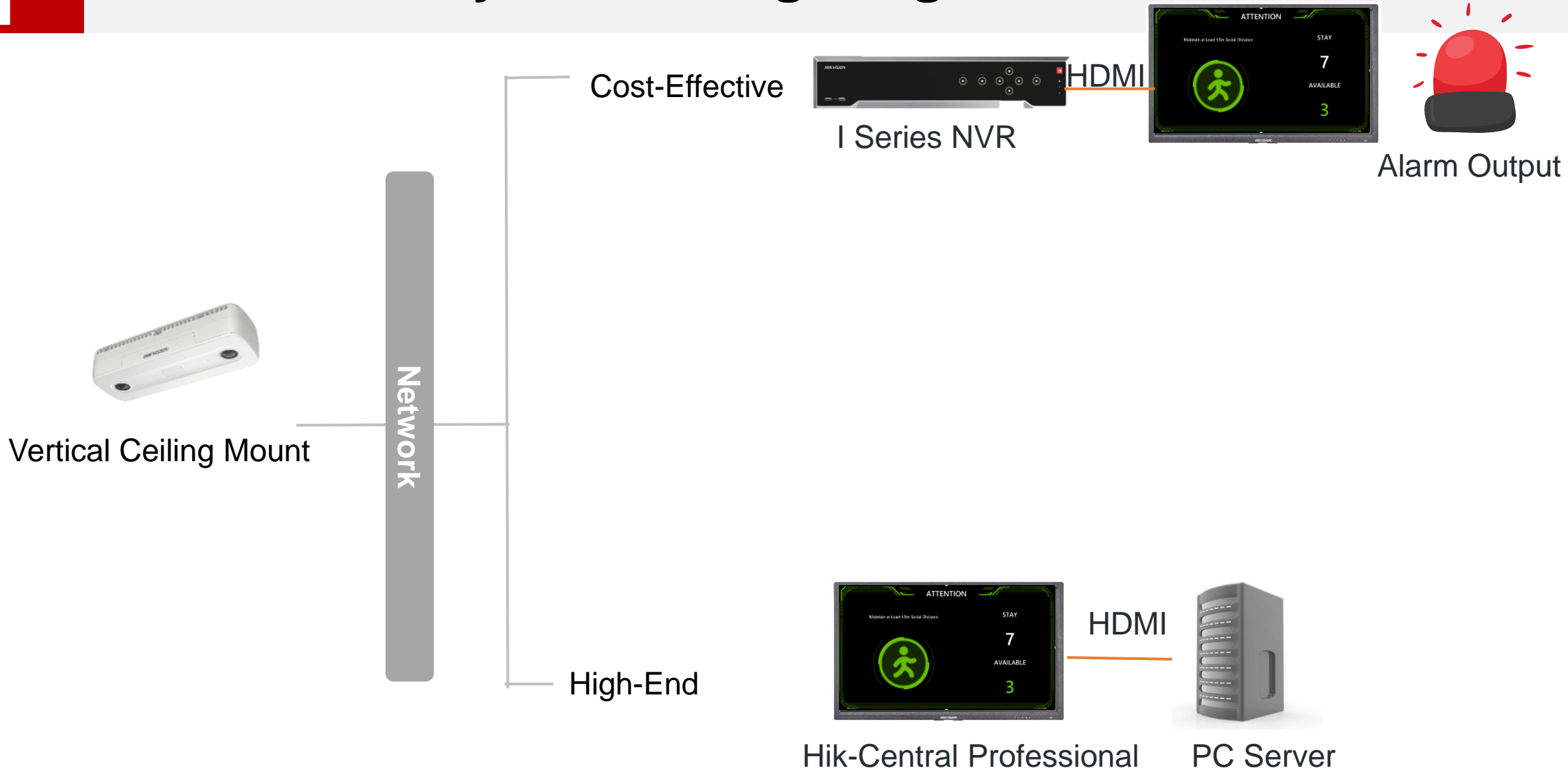
	DS-K5604A-3XF/V	DS-K1T671TM-3XF	DS-K5671-3XF/ZU
	 		
LCD screen	10.1 inch	7 inch	7 inch
Face capacity	50,000	50,000	50,000
Card capacity	N/A	50,000 M1 cards	N/A
Thermal imaging resolution	120 x 160	120 x 160	120 x 160
Temperature range and accuracy	30-45°C (±0.5 °C)	30-45°C (±0.5 °C)	30-45°C (±0.5 °C)
Authentication Distance	0.3-2m	0.3-2m	0.3-2m
Mask detection	Support	Support	Support
Fast temperature measurement	Support	Support	Support
Deployment	Plug & play, floor standing Including power adaptor	Wall mounting/ floor standing with mounting pole	Face recognition module for barriers

# Visitor Density Monitoring Solution



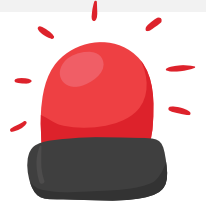
# 1

## Visitor Density Monitoring-Single Entrance/Exit



# 1

## Visitor Density Monitoring-Single Entrance/Exit



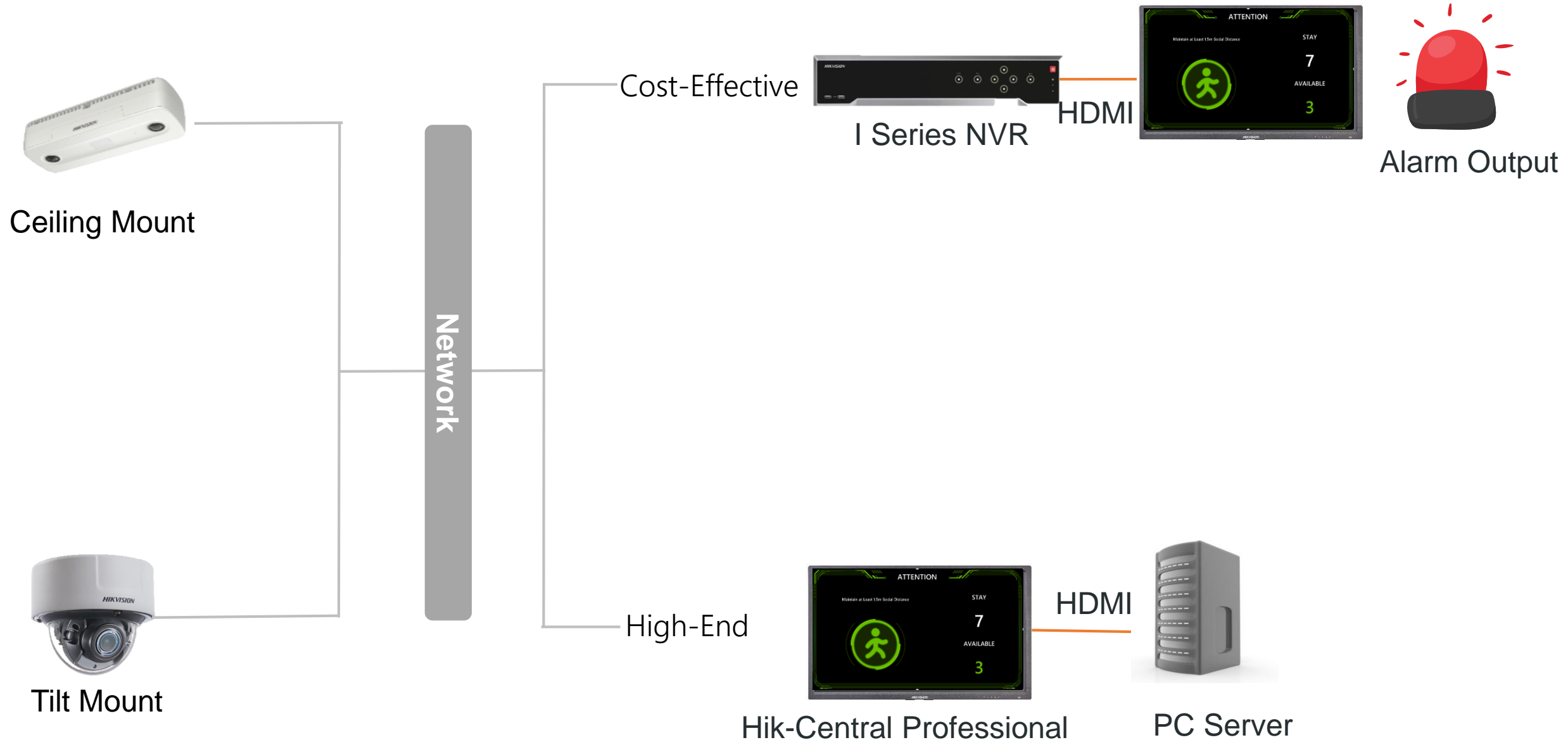
Vertical Ceiling Mount





# 2

## Visitor Density Monitoring-Multiple Entrances/Exits



# 2

## Visitor Density Monitoring-Multiple Entrances/Exits



## Dual-Lens People Counting Network Camera

- 1/2.8" Progressive Scan CMOS
- 1920 × 1200 @ 30fps
- 2 mm fixed lens
- IP66, IK08



DS-2CD6825G0/C-I(S)

### Advantages:

- 3D binocular stereo vision and deep learning algorithm improve the accuracy of people counting
- Dual lenses colorful images, more real view and details
- Supporting reverse alarm
- Supporting filtering targets by height

## Single-Lens People Counting Network Camera

- 1.8" Progressive Scan CMOS
- 2560 × 1440 @ 30fps
- Color: 0.002 Lux @ (F1.2, AGC ON)
- H.265, H.265+, H.264+, H.264
- 140dB WDR
- 3D DNR
- IK10



iDS-2CD7146G0-IZS

### Advantages:

- People counting and monitoring at the same time, flexible installation points
- Deep learning algorithm improve the accuracy of people counting
- Excellent low-light performance via DarkFighter technology
- Clear imaging against strong back light due to LightFighter technology





# Thanks

See far, go further